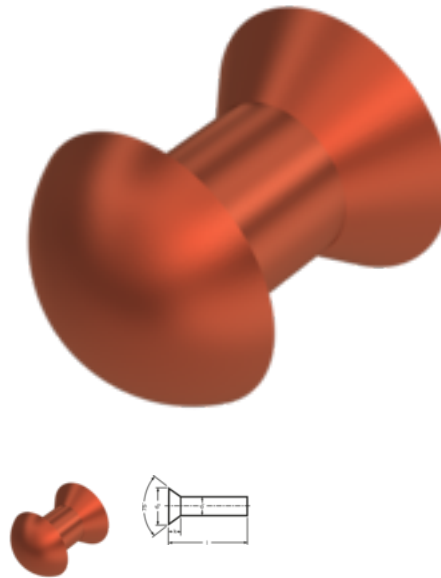


# DIN 661, Countersunk head rivet, 4x12, CU



**Article number**  
510661412

**EAN**  
None

**Weight in kg**  
0.002

**Customs number**  
74152900

**Material**  
Copper

**Quality**  
CU

**Diameter**  
4 mm

**Length**  
12 mm

## Product details

DIN 661 wurde zurückgezogen und ist austauschbar mit ISO 1051 C.

Material	Copper
Length	12 mm
Total length l	12 mm
Norm	ISO 1051 C
Diameter	4 mm
Height of the head k	2 mm
Quality	CU
Coating	pln
Diameter of the head dk	7 mm
Diameter d	4 mm

## Remarks

Replacement ISO 1051.

## Product variants

Diameter (mm)	2	3	4	5	6
Length (mm)					
8		•			
10	•	•	•	•	
12			•	•	
16		•	•	•	•
20		•	•	•	
25			•	•	•
30					•