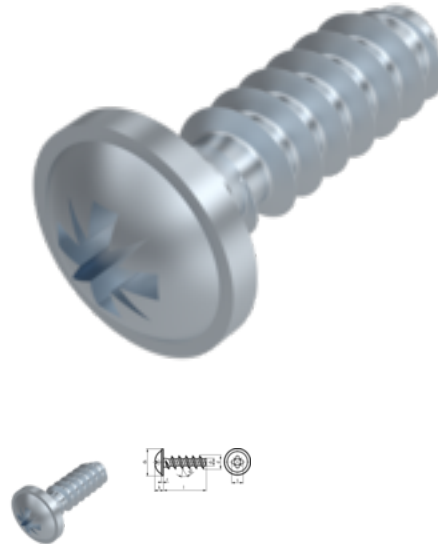


PLASFAST 30° Linsenkopfschraube mit Scheibe, STP 3, 5x10, ST, zinc-plated, standard, 5 µm, Zn5/An/T0, Z 2



Article number
W0264AAAC03510

EAN
None

Weight in kg
0.001

Customs number
73181499

Force application type
Pozidriv cross recess

Diameter
3,5 mm

Length
10 mm

Product details

Material	Steel
Total length l	10 mm
Length	10 mm
Norm	PLASFAST 30°
Diameter	3.5 mm
Height of the head k	2.4 mm
Coating	zinc-plated, standard, 5 µm, Zn5/An/T0
Diameter of the head dk	7 mm
Force application type	Pozidriv cross recess
Diameter d1	1.91 mm
Quality	ST
Force application	Z 2
Diameter d	3,5 mm

Product variants

Diameter (mm)	2,2	2,5	3	3,5	4	5	6
Length (mm)							
5	•	•					
6	•	•	•				
8	•	•		•	•		
10	•	•	•	•	•		
12		•	•	•		•	
14				•		•	
16			•	•	•	•	•
20			•	•	•	•	•
25				•	•	•	•
30						•	